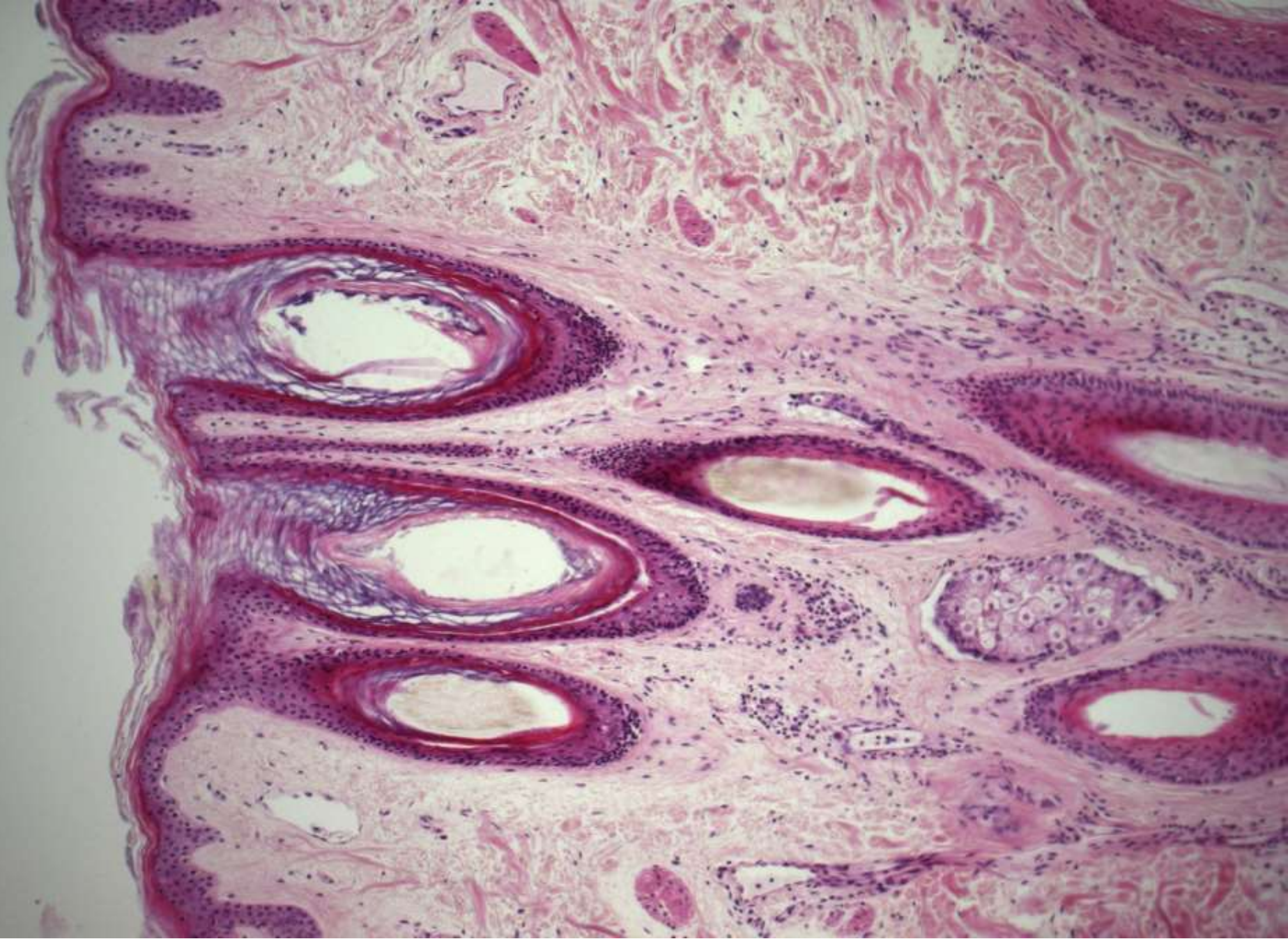


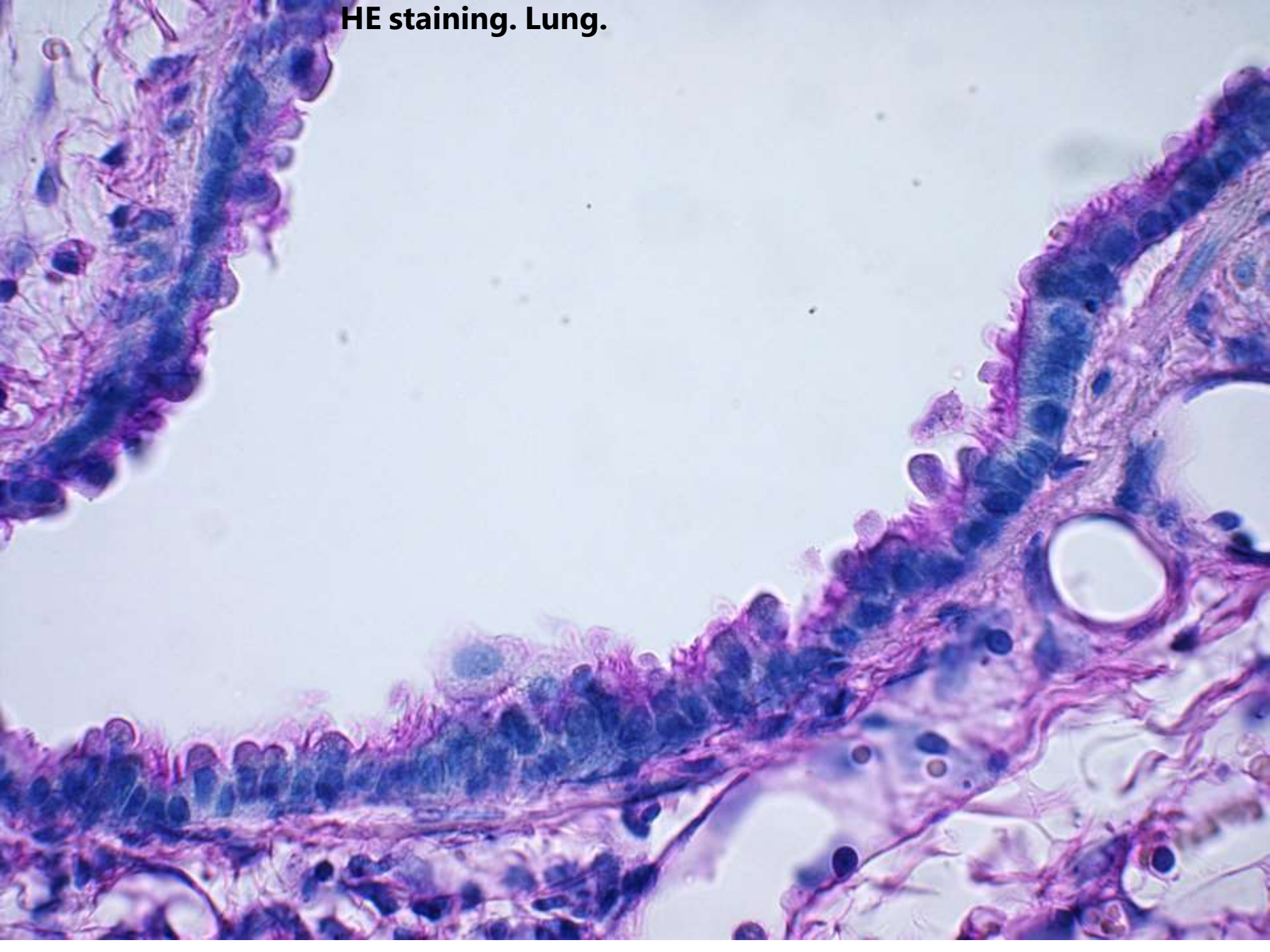
HE staining. Epithelium in esophagus.





He staining. Hair follicles in skin

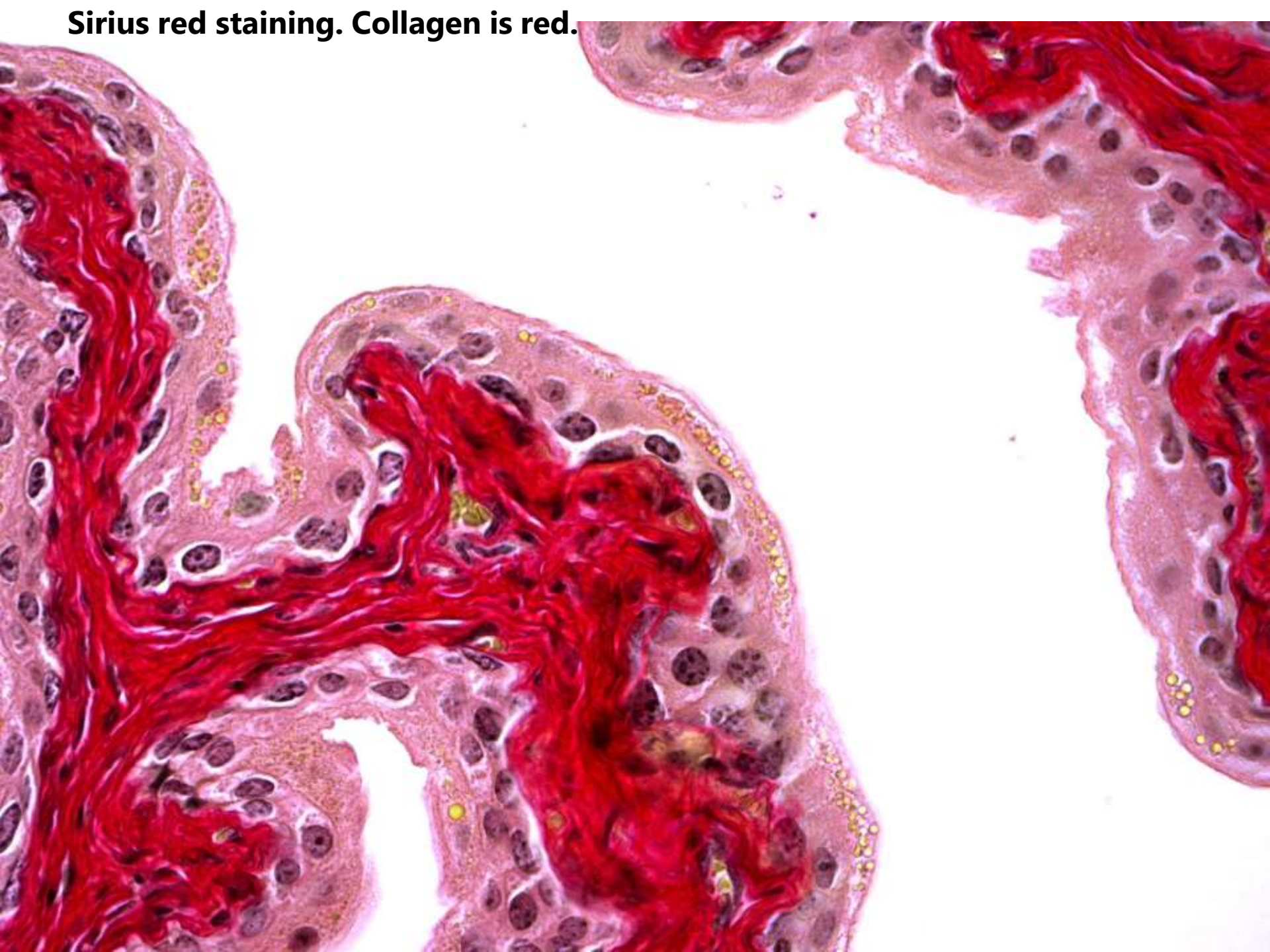
HE staining. Lung.

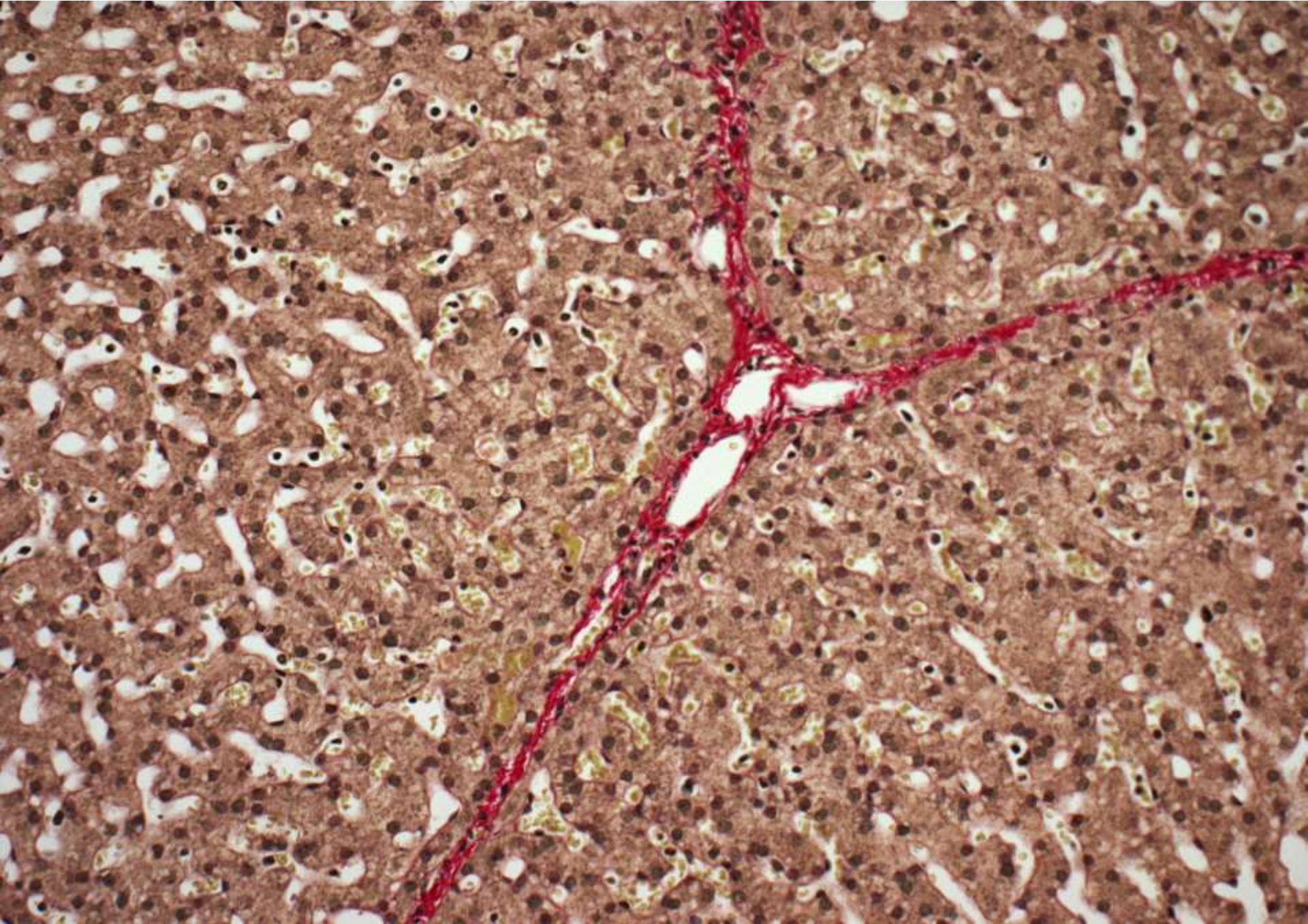


HE staining. Colonic mucosa



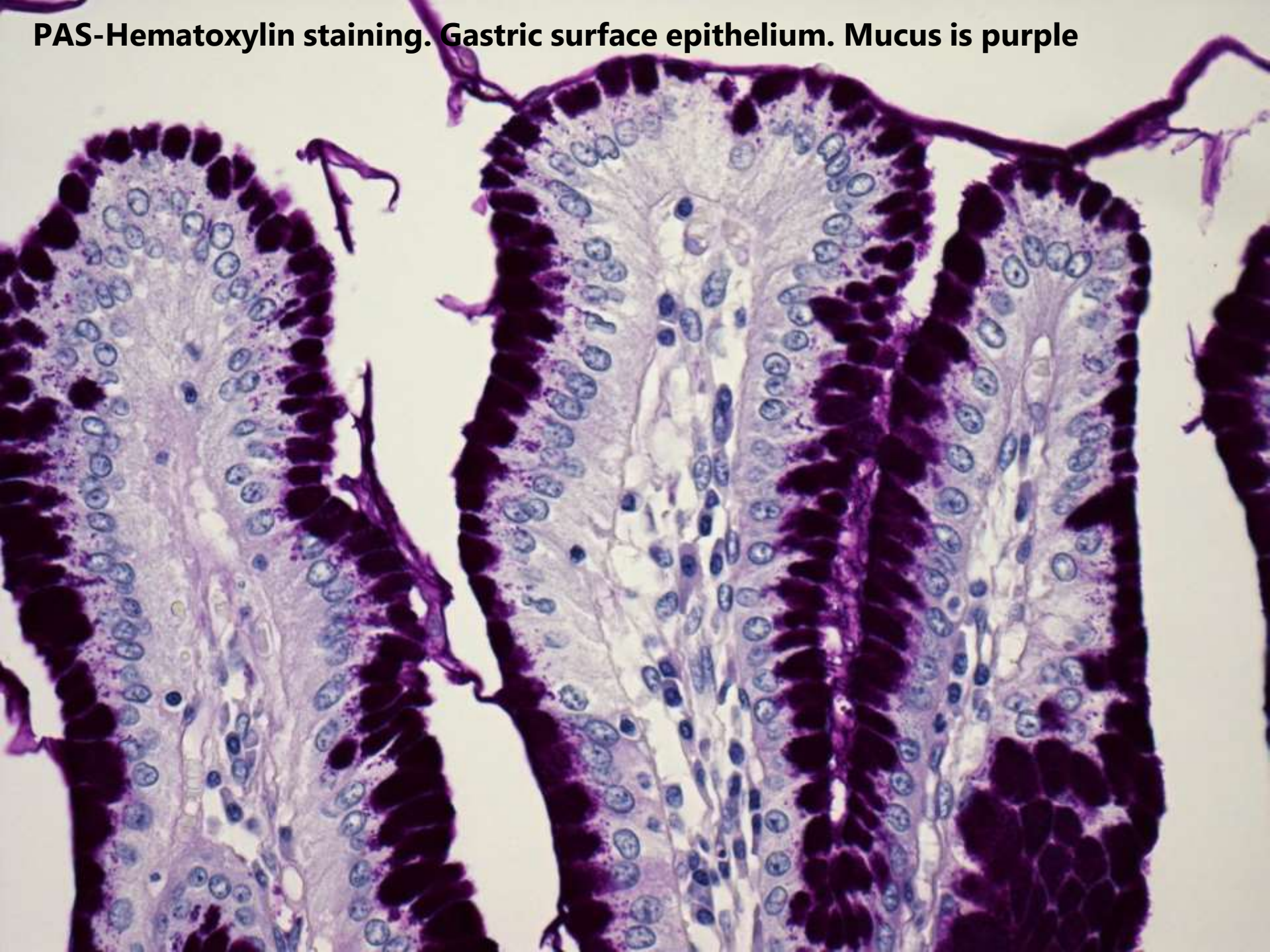
Sirius red staining. Collagen is red.





Sirius red staining. Liver. Collagen is red.

PAS-Hematoxylin staining. Gastric surface epithelium. Mucus is purple



PAS-Hematoxylin staining. Goblet cells and brush border (glycoproteins) are purple

