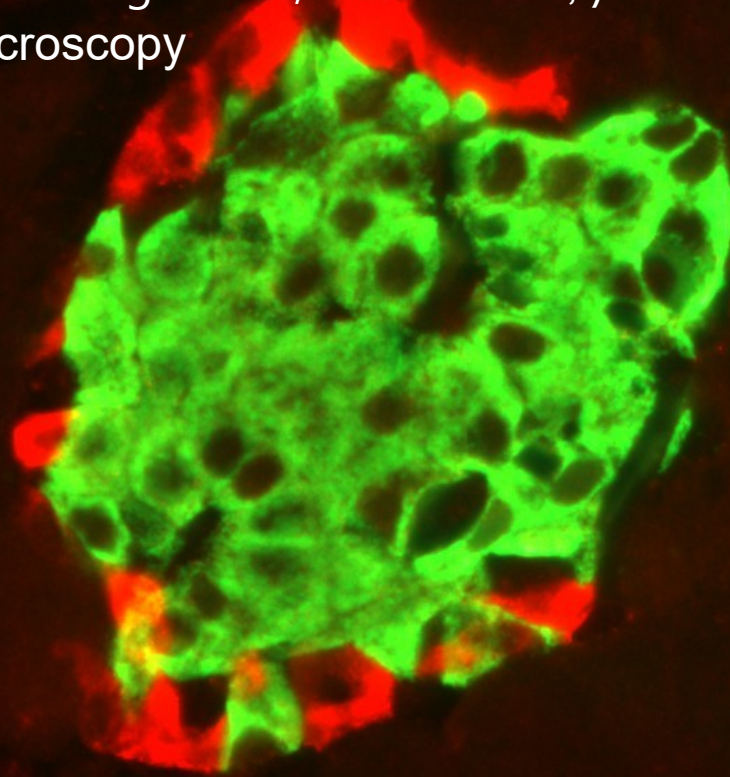
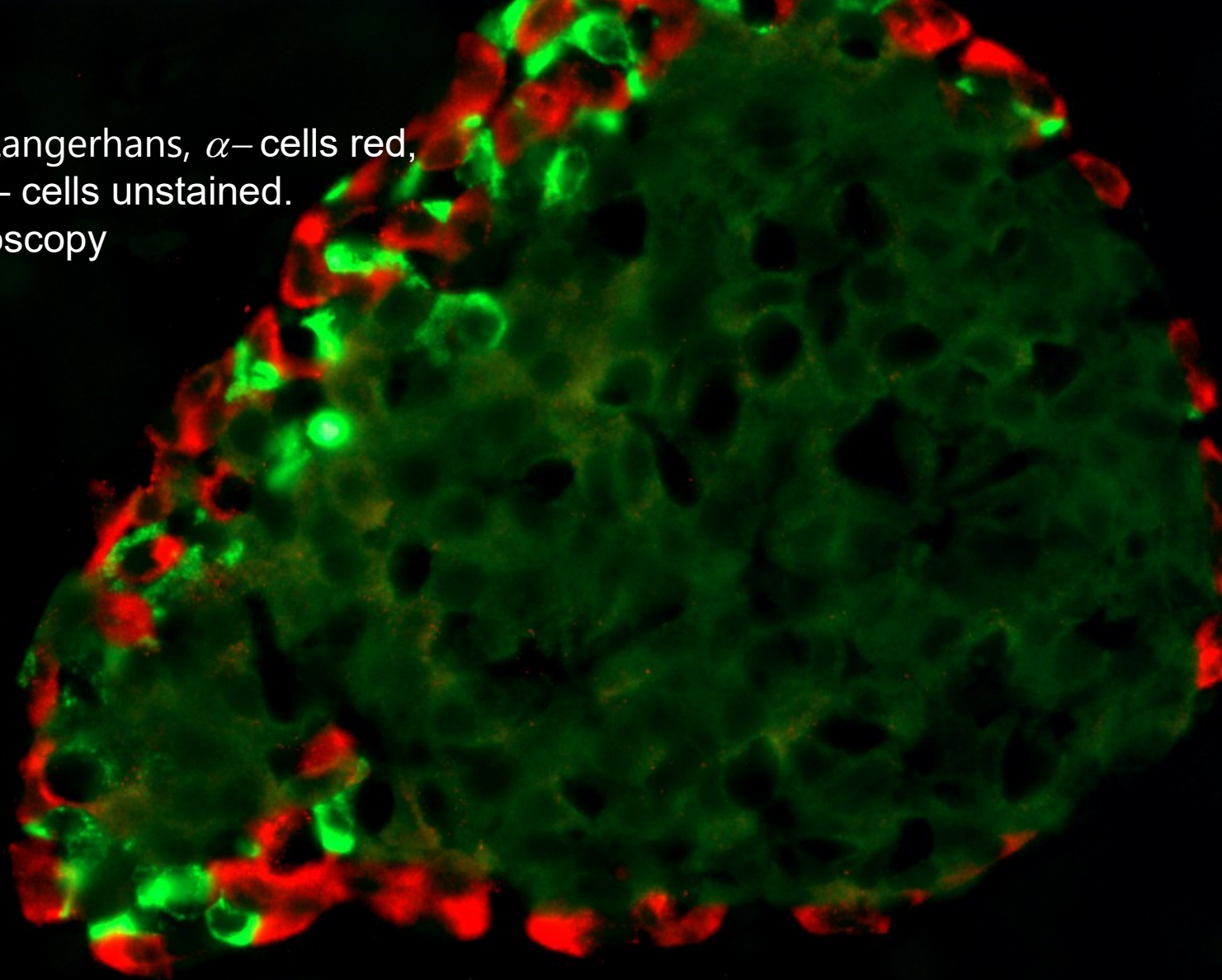


Immunohistochemistry examples

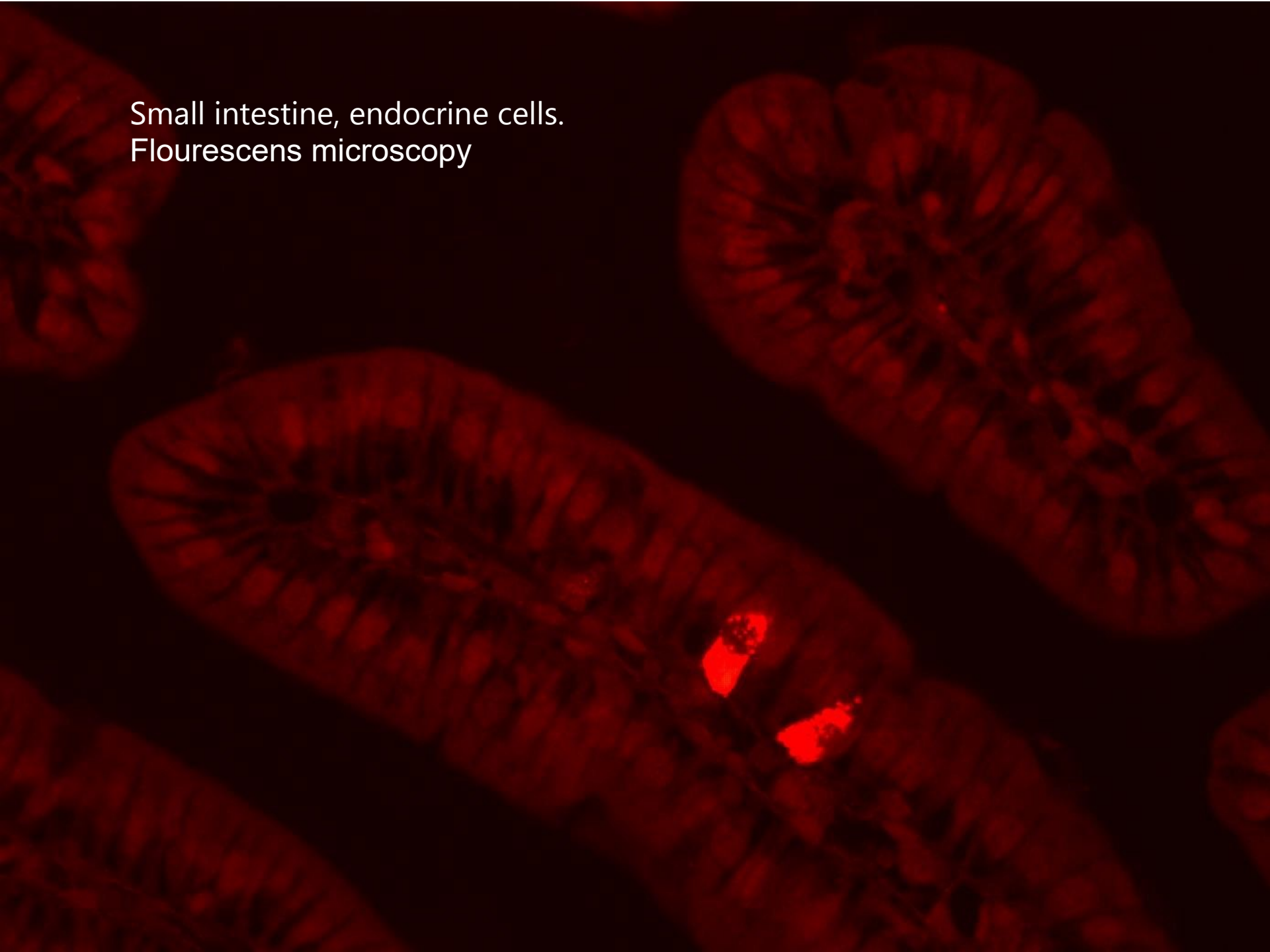
Pancreas, Islet of Langerhans,  $\alpha$ - cells red,  $\beta$ - cells green,  
fluorescens microscopy



Pancreas, Islet of Langerhans,  $\alpha$ - cells red,  
 $\delta$ - cells green,  $\beta$ - cells unstained.  
Flouescens microscopy



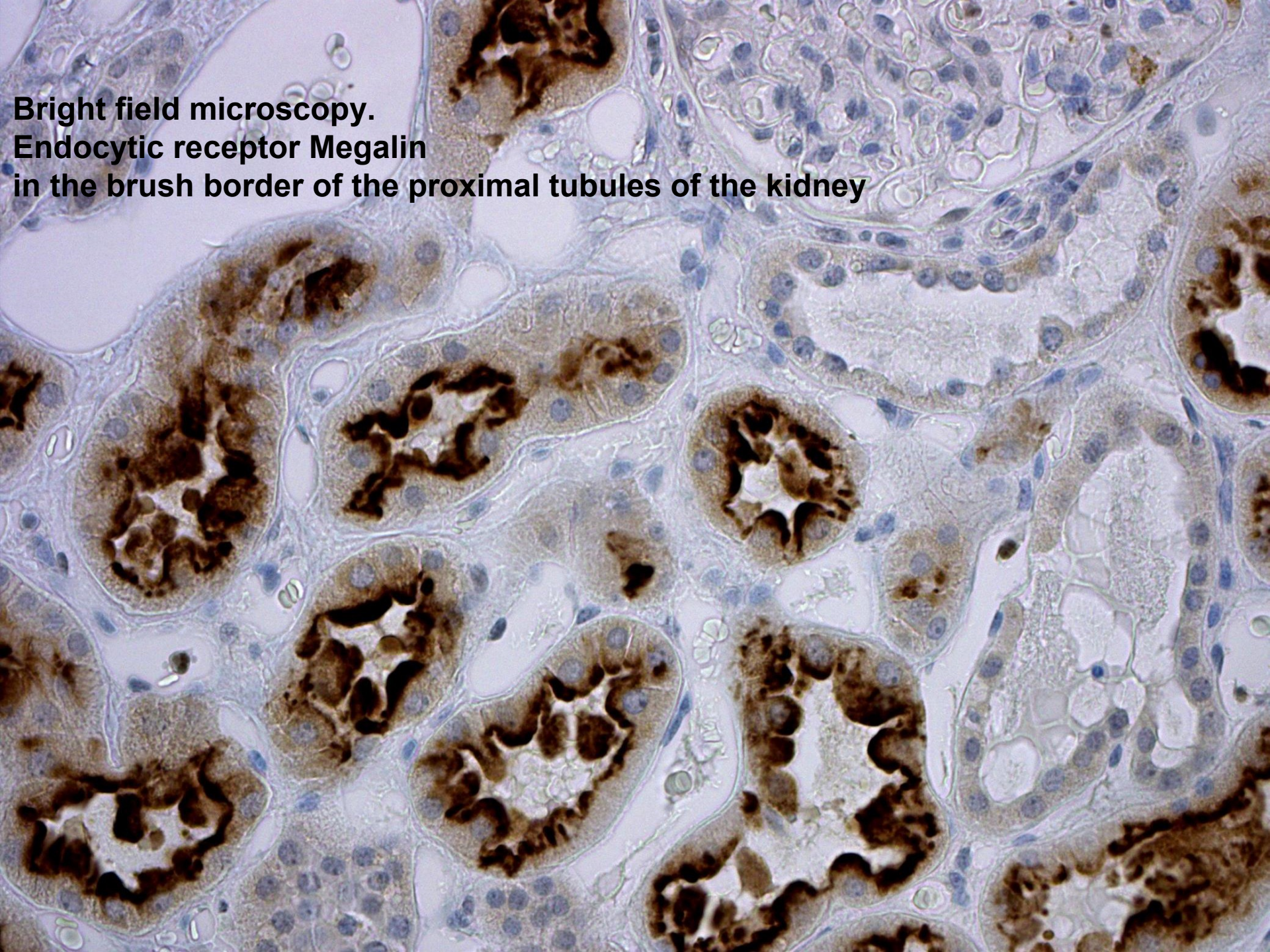
Small intestine, endocrine cells.  
Flouescens microscopy



**Bright field microscopy. GLP-1 receptor localisation  
in the basolateral cell membranes  
of the Brunners glands**



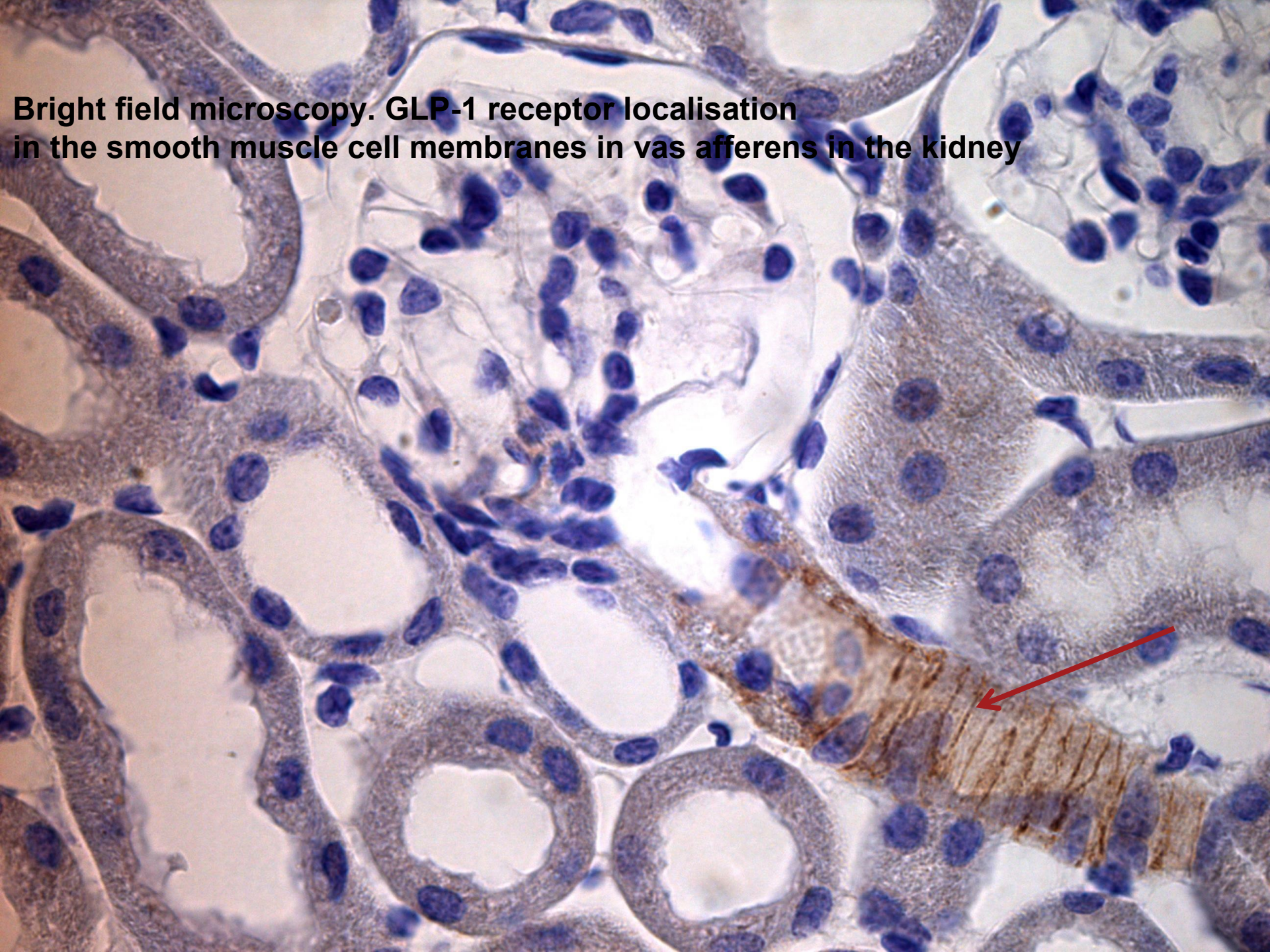
**Bright field microscopy.  
Endocytic receptor Megalin  
in the brush border of the proximal tubules of the kidney**

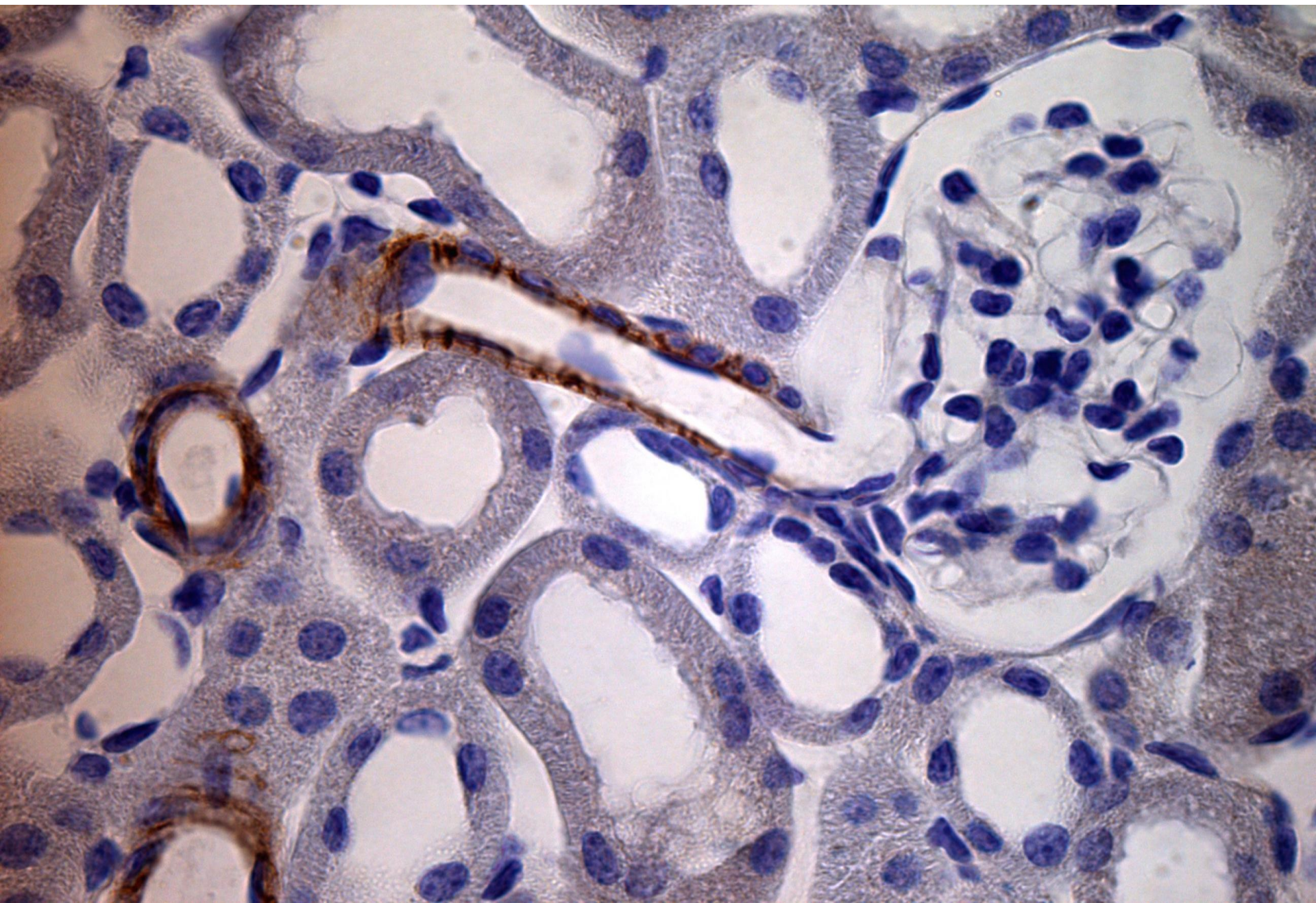


**Bright field microscopy. Somatostatin cells in the small intestine**



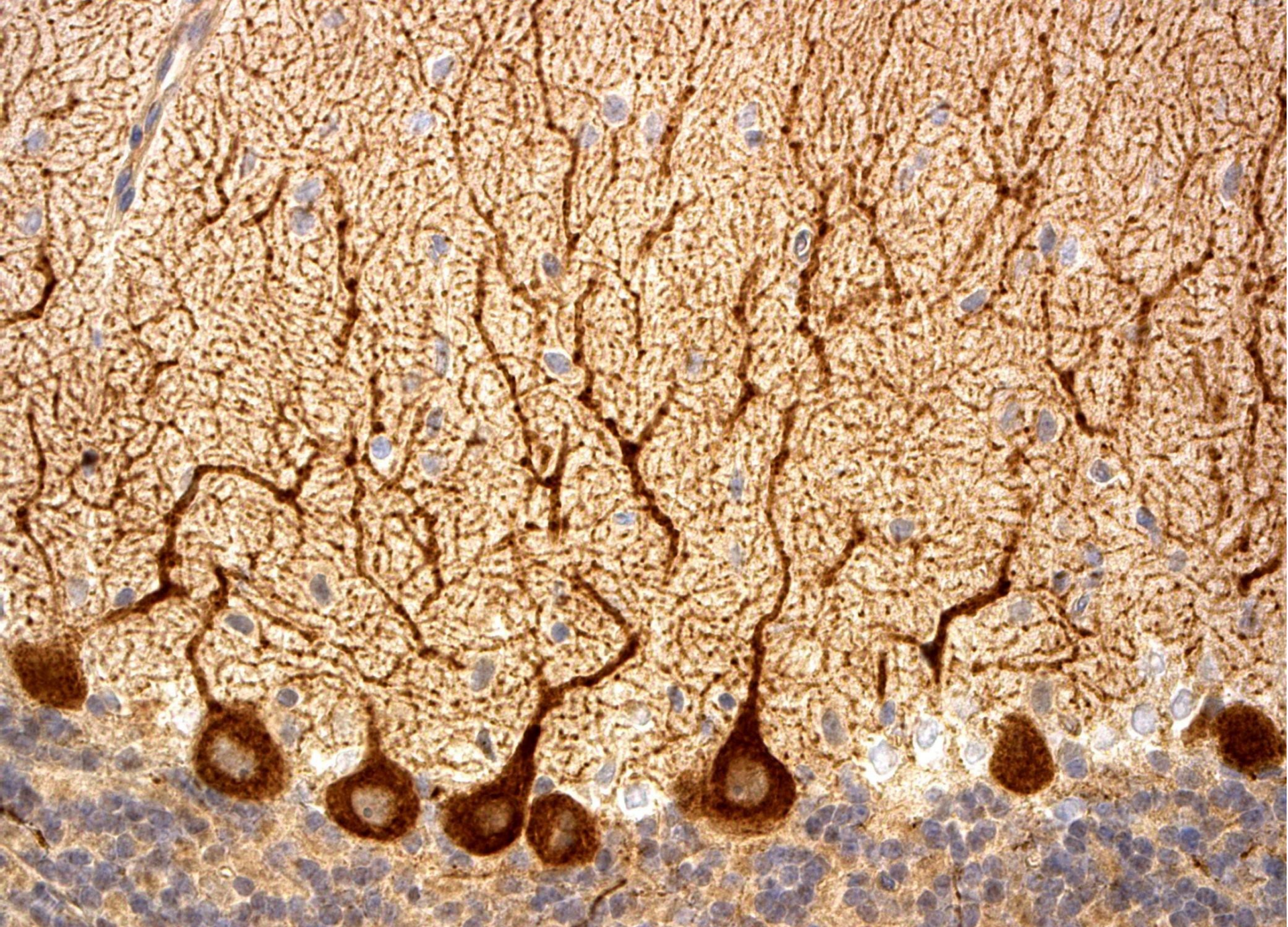
**Bright field microscopy. GLP-1 receptor localisation in the smooth muscle cell membranes in vas afferens in the kidney**







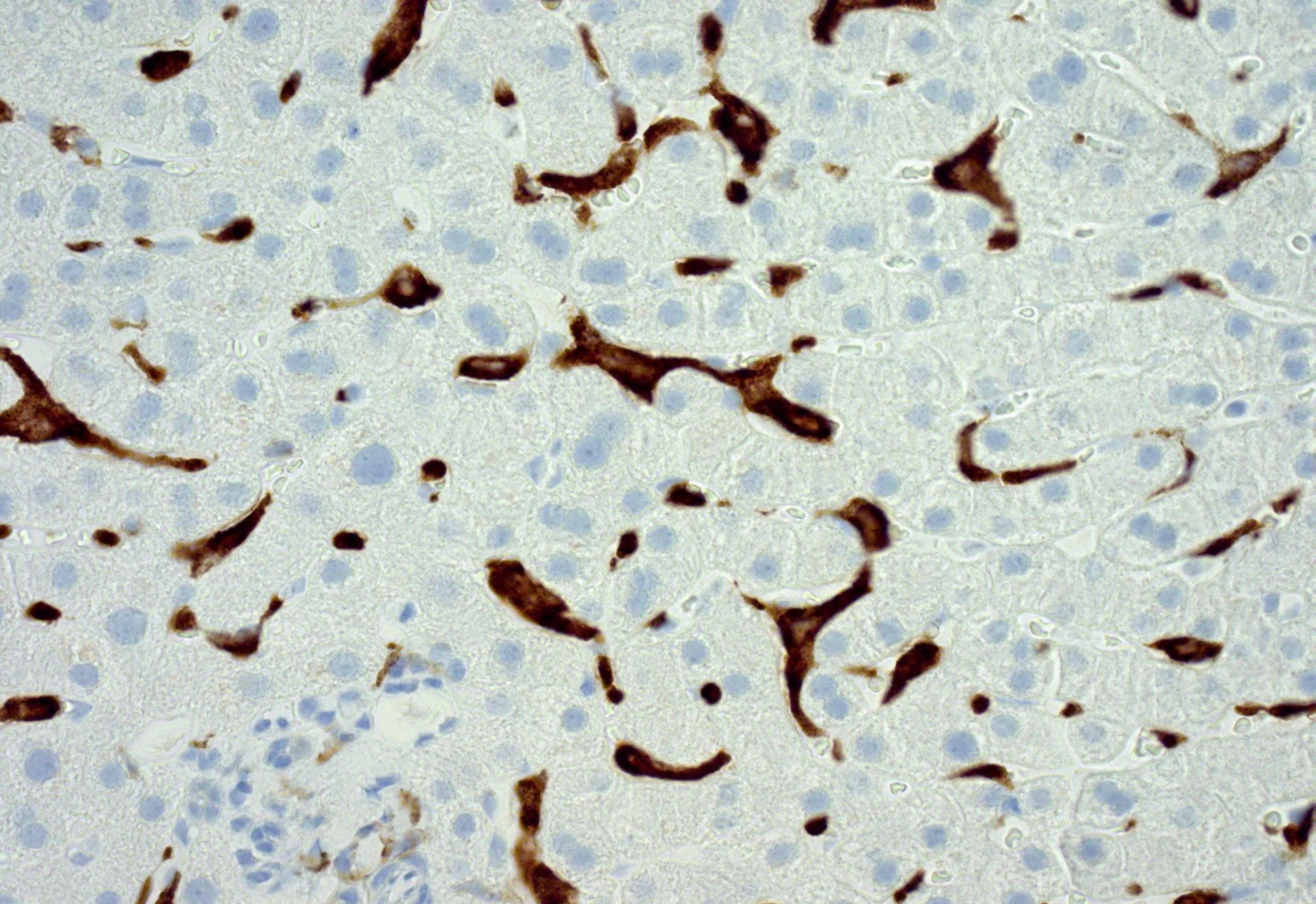
**Bright field microscopy. GLP-1 receptor localisation  
in the smooth muscle cell membranes in vas afferens in the kidney**



**Bright field microscopy. CD 320 localisation to purkinje cells of the cerebellum**



**Bright field microscopy. Arg 2 immunoreaction in smooth muscle cells in intestinal arteries.**



**Bright field microscopy. CD 163 immunoreaction localized to kupfer cells in the live**

**Bright field microscopy. GLP-1 receptor localisation to the basolateral cell membranes of intestinal endocrine cells**

